



K. L. E. Society's
Basavaprabhu Kore Arts, Science and Commerce College, Chikodi

(Accredited at 'A' by NAAC with 3.26 CGPA)

Website: www.klesbkcollegechikodi.edu.in e-mail: kles_bkcc@rediffmail.com Ph: 08338-272176

Girls Common Room





**K. L. E. Society's
Basavaprabhu Kore Arts, Science and Commerce College, Chikodi**

(Accredited at 'A' by NAAC with 3.26 CGPA)

Website: www.klesbkcollegechikodi.edu.in e-mail: kles_bkcc@rediffmail.com Ph: 08338-272176

Sanitary Napkin Vender Machine

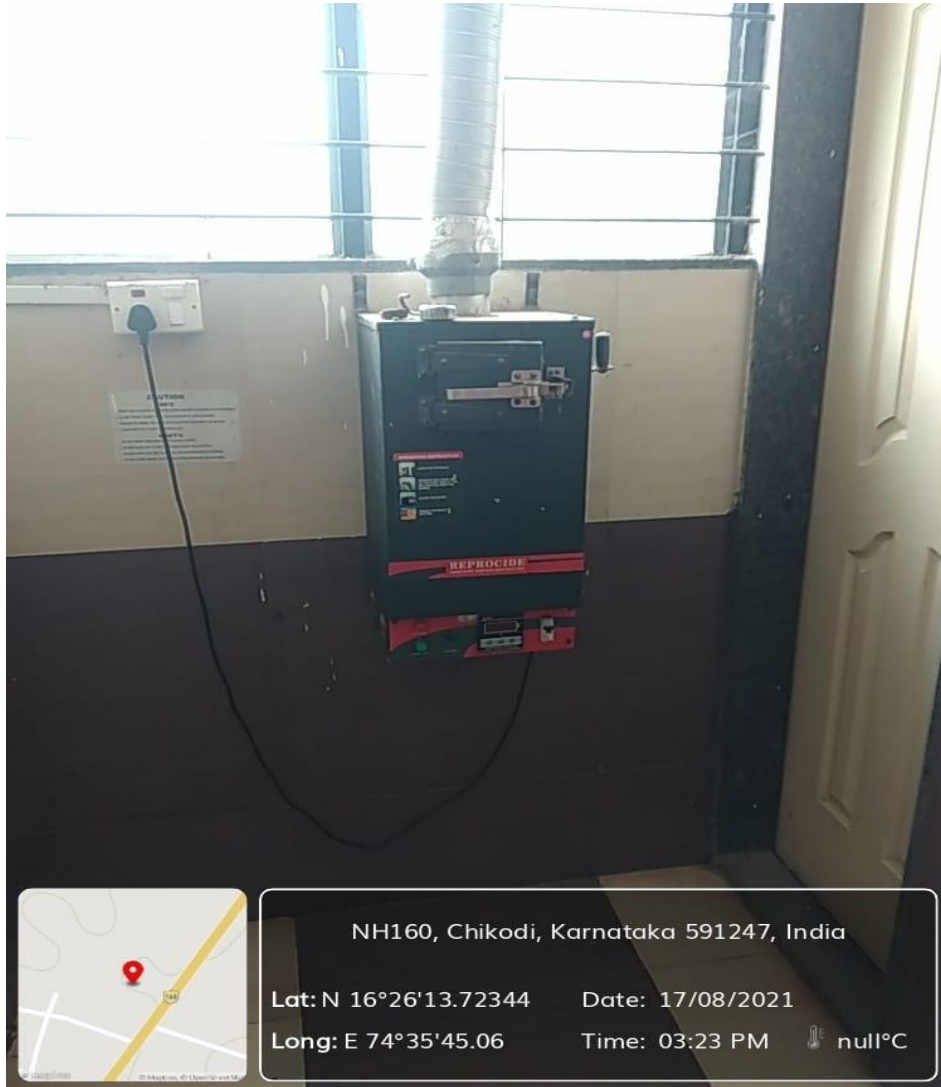




K. L. E. Society's
Basavaprabhu Kore Arts, Science and Commerce College, Chikodi
(Accredited at 'A' by NAAC with 3.26 CGPA)

Website: www.klesbkcollegechikodi.edu.in e-mail: kles_bkcc@rediffmail.com Ph: 08338-272176

Sanitary Napkin Incinerator Machine





K. L. E. Society's
Basavaprabhu Kore Arts, Science and Commerce College, Chikodi

(Accredited at 'A' by NAAC with 3.26 CGPA)

Website: www.klesbkcollegechikodi.edu.in e-mail: kles_bkcc@rediffmail.com Ph: 08338-272176

Drinking Water



NH160, Chikodi, Karnataka 591247, India

Lat: N 16°26'13.73352

Date: 17/08/2021

Long: E 74°35'45.07476

Time: 03:18 PM

🌡️ null°C



**K. L. E. Society's
Basavaprabhu Kore Arts, Science and Commerce College, Chikodi**

(Accredited at 'A' by NAAC with 3.26 CGPA)

Website: www.klesbkcollegechikodi.edu.in e-mail: kles_bkcc@rediffmail.com Ph: 08338-272176

Well Furnished Rest Rooms





**K. L. E. Society's
Basavaprabhu Kore Arts, Science and Commerce College, Chikodi**

(Accredited at 'A' by NAAC with 3.26 CGPA)

Website: www.klesbkcollegechikodi.edu.in e-mail: kles_bkcc@rediffmail.com Ph: 08338-272176

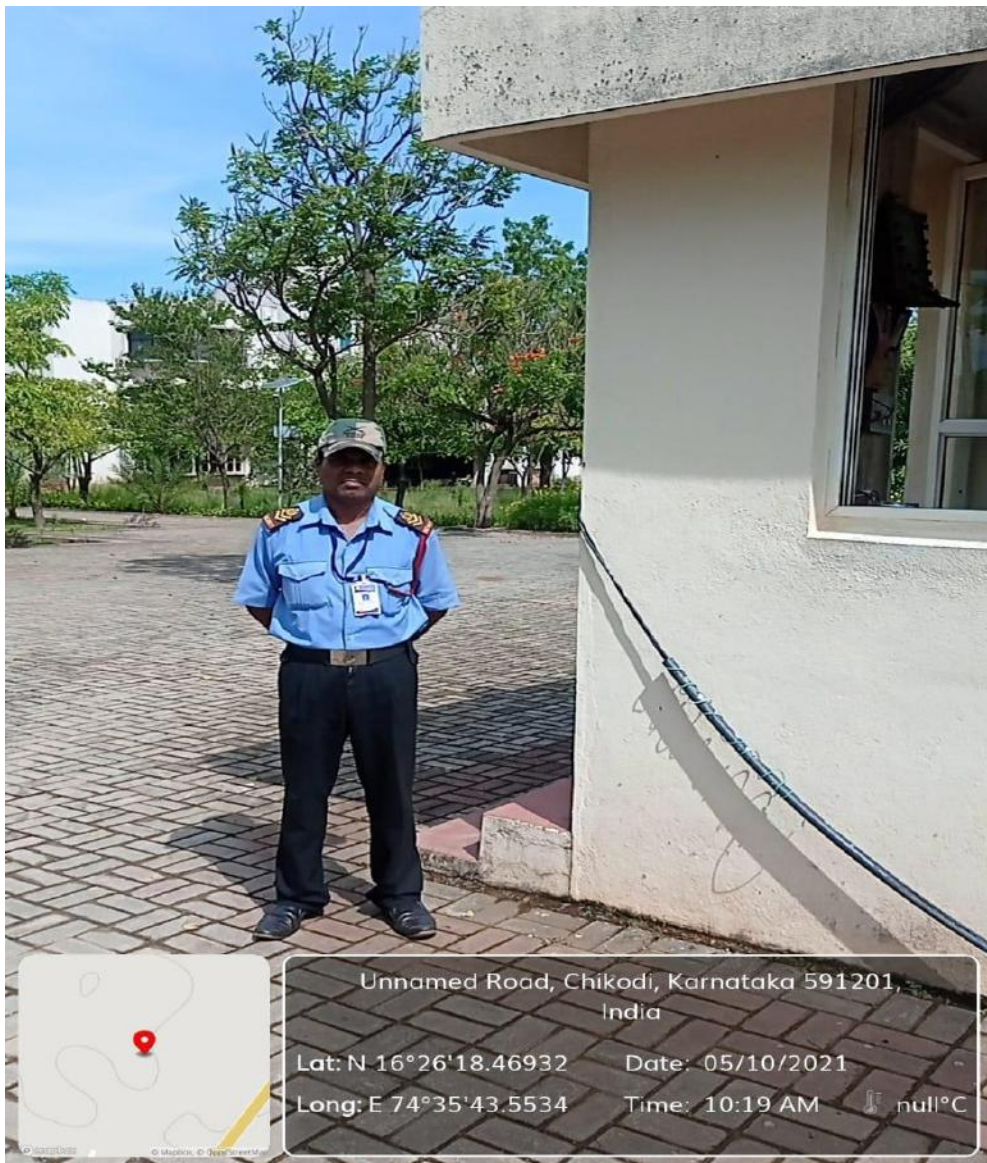
CCTV Camera





K. L. E. Society's
Basavaprabhu Kore Arts, Science and Commerce College, Chikodi
(Accredited at 'A' by NAAC with 3.26 CGPA)
Website: www.klesbkcollegechikodi.edu.in e-mail: kles_bkcc@rediffmail.com Ph: 08338-272176

Security Guard



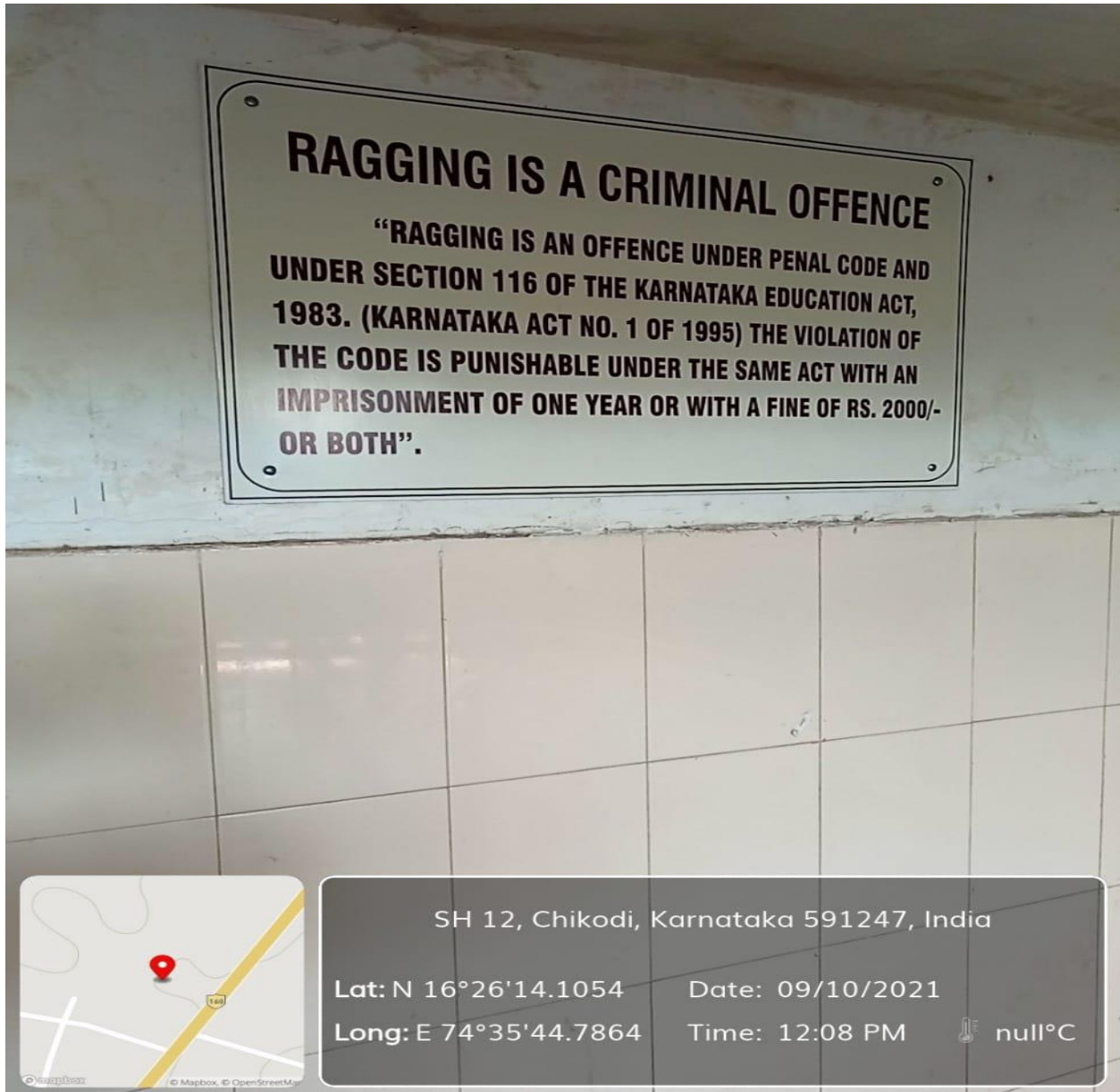


**K. L. E. Society's
Basavaprabhu Kore Arts, Science and Commerce College, Chikodi**

(Accredited at 'A' by NAAC with 3.26 CGPA)

Website: www.klesbkcollegechikodi.edu.in e-mail: kles_bkcc@rediffmail.com Ph: 08338-272176

Anti Ragging Cell





**K. L. E. Society's
Basavaprabhu Kore Arts, Science and Commerce College, Chikodi**

(Accredited at 'A' by NAAC with 3.26 CGPA)

Website: www.klesbkcollegechikodi.edu.in e-mail: kles_bkcc@rediffmail.com Ph: 08338-272176

Warden



Chikodi, Karnataka, India
CHQV+JX3, Chikodi, Karnataka 591201, India
Lat 16.438911°
Long 74.594956°
11/10/21 01:42 PM



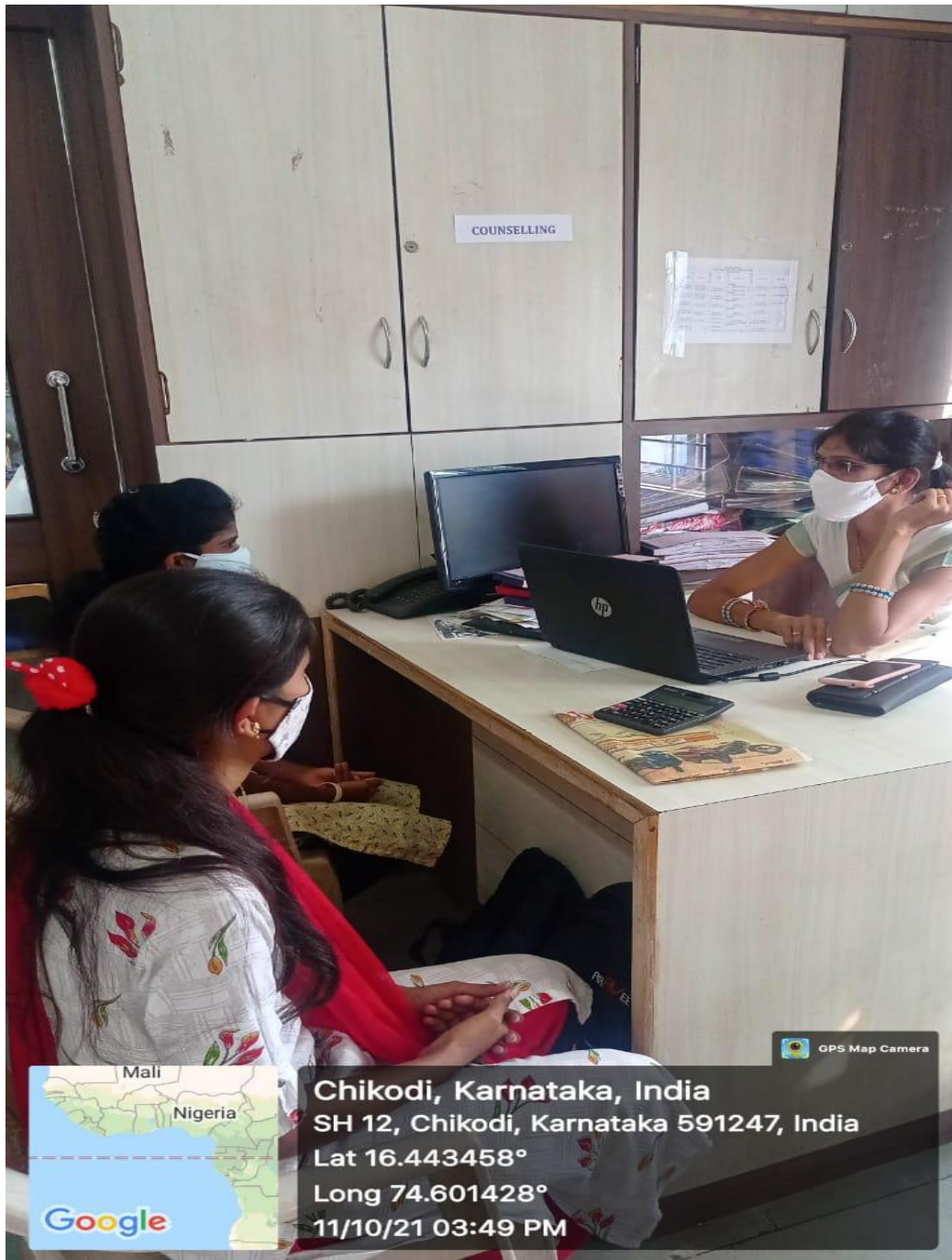


**K. L. E. Society's
Basavaprabhu Kore Arts, Science and Commerce College, Chikodi**

(Accredited at 'A' by NAAC with 3.26 CGPA)

Website: www.klesbkcollegechikodi.edu.in e-mail: kles_bkcc@rediffmail.com Ph: 08338-272176

Counselling





K. L. E. Society's
Basavaprabhu Kore Arts, Science and Commerce College, Chikodi

(Accredited at 'A' by NAAC with 3.26 CGPA)

Website: www.klesbkcollegechikodi.edu.in e-mail: kles_bkcc@rediffmail.com Ph: 08338-272176

Suggestion Box





K. L. E. Society's
Basavaprabhu Kore Arts, Science and Commerce College, Chikodi

(Accredited at 'A' by NAAC with 3.26 CGPA)

Website: www.klesbkcollegechikodi.edu.in e-mail: kles_bkcc@rediffmail.com Ph: 08338-272176

Grievance Box





**K. L. E. Society's
Basavaprabhu Kore Arts, Science and Commerce College, Chikodi**

(Accredited at 'A' by NAAC with 3.26 CGPA)

Website: www.klesbkcollegechikodi.edu.in e-mail: kles_bkcc@rediffmail.com Ph: 08338-272176

Separate Comfort for Staff and Ladies in Canteen



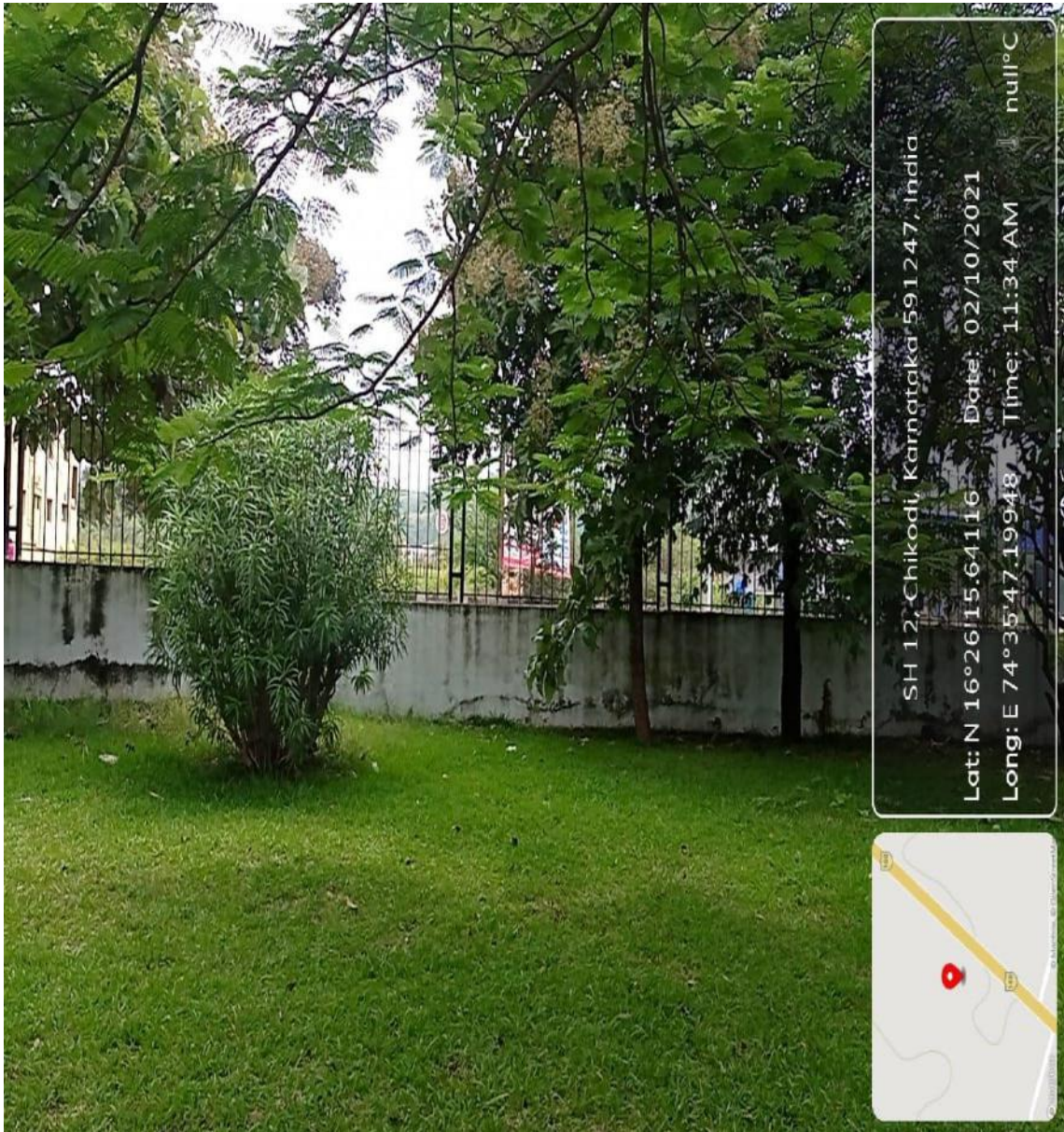


K. L. E. Society's
Basavaprabhu Kore Arts, Science and Commerce College, Chikodi

(Accredited at 'A' by NAAC with 3.26 CGPA)

Website: www.klesbkcollegechikodi.edu.in e-mail: kles_bkcc@rediffmail.com Ph: 08338-272176

Compound wall with Iron Grill





K. L. E. Society's
Basavaprabhu Kore Arts, Science and Commerce College, Chikodi

(Accredited at 'A' by NAAC with 3.26 CGPA)

Website: www.klesbkcollegechikodi.edu.in e-mail: kles_bkcc@rediffmail.com Ph: 08338-272176

Ladies Reading Room in Library



Chikodi, Karnataka, India
CHQW+7MM, Chikodi, Karnataka 591201, India
Lat 16.437808°
Long 74.596455°
11/10/21 12:14 PM



**K. L. E. Society's
Basavaprabhu Kore Arts, Science and Commerce College, Chikodi**

(Accredited at 'A' by NAAC with 3.26 CGPA)

Website: www.klesbkcollegechikodi.edu.in e-mail: kles_bkcc@rediffmail.com Ph: 08338-272176

Post Office Box

